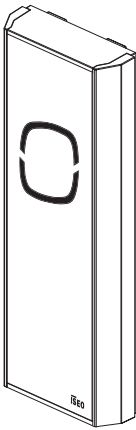


Stylos 2

INSTALLATION GUIDE (UK)



Iseo Serrature s.p.a
Via San Girolamo 13
25055 Pisogne (BS)
ITALY
Tel. +39 0364 8821
iseo@iseo.com

ELECTRONIC SUPPORT SERVICE
iseozero1.com

Non contractual document. Subject to change. Cod. 60000STY2LV01.3 - 08/05/2018
Stylos 2 Credential Reader inst. guide (UK) - © 2017 Iseo Serrature S.p.a. - www.iseo.com

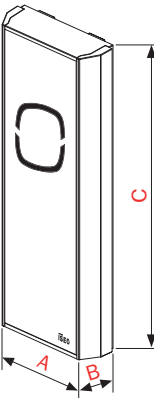
WARNINGS



- Read this manual prior to use the device in order to ensure a safe and proper use.
- Preserve this manual as future reference.
- The installation of the device requires the intervention of qualified staff, adequately trained by ISEO.
- The instructions should be carefully followed during installation. These instructions and any maintenance instructions should be passed on by the installer to the user.
- No modifications of any kind are permitted, except for those described in these instructions.
- The product must be destined only for the use for which it is expressly designed and therefore as a credential reader for civil and industrial locations. Any other use is considered improper and dangerous.
- The electrical connection must be made according to the constructor's instructions and respecting the regulations in force.
- In the event of a failure and/or poor operation, remove the power supply using the main switch and do not tamper with it. For all repairs, exclusively contact a technical assistance center authorized by the constructor.
- Before performing any cleaning operation on the product, uncouple the appliance from the electrical power supply network, by opening the system switch.

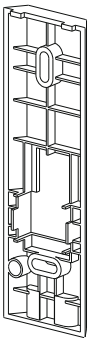
1. VERSIONS AND DIMENSIONS

Credential reader with led



A = 47,5mm
B = 17,5mm
C = 130mm

Spacer for wall installation

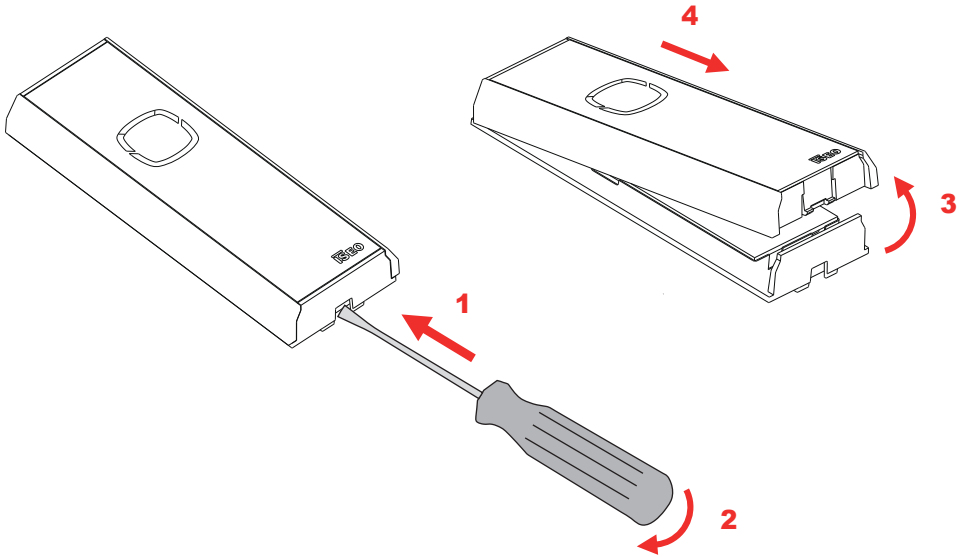


A = 40mm
B = 10mm
C = 125mm



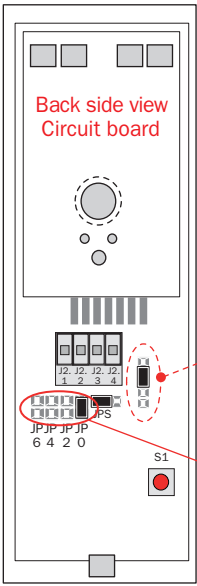
This guide includes instruction to configure the Stylos as **Stand-Alone gate** or as **Reader/Validator**, connected to Atlas. Refer to the proper section.

2. DISASSEMBLING

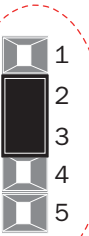


Disconnect the power before opening the device.

3. STAND-ALONE GATE SETTING



Only to set the Stylos 2 to be used as **Stand-Alone gate**, you have to close, by a jumper, PIN 2 and 3 as shown in the picture.



Fit the jumper when the Stylos is OFF.

Stylos as **Stand-Alone gate** = Address 0 (Master)

3.1 STAND-ALONE GATE ELECTRICAL CONNECTIONS

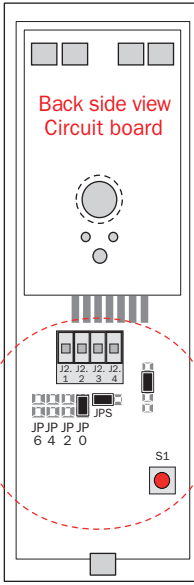
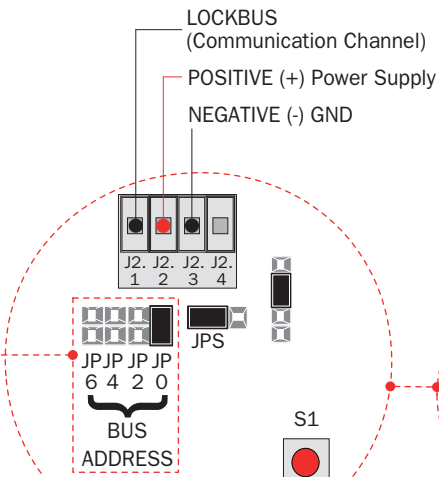


- Power supply: 8-30 VDC 0.5A MAX
- Minimum/maximum cross-section of the cables is: 0.20÷1.5 mm² (24÷15AWG).

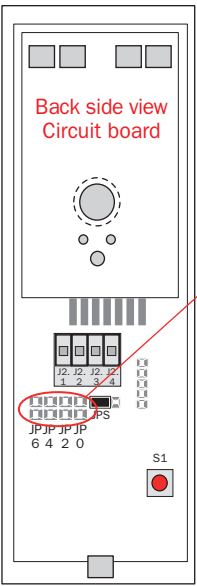
LEGEND:

J2.1/2/3/4 = Power supply/Lockbus
JPS = System Jumper (reserved)
S1 = Programming button
JP 0/2/4/6 = Bus Address Jumpers

BUS ADDRESS	JP JP JP JP	FUNCTION
ADDRESS 0 =	6 4 2 0	(Master)
ADDRESS 2 =		(slave)
ADDRESS 4 =		(slave)
ADDRESS 6 =		(slave)



4. READER/VALIDATOR SETTING



Stylos as **Reader/Validator** = Address 1



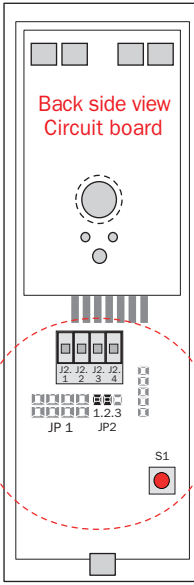
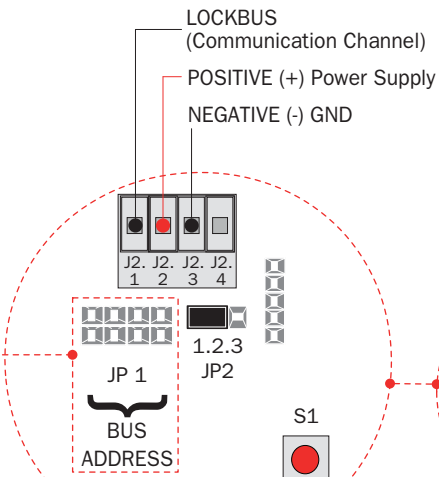
For more information about Stylos and Atlas, refer to the **Atlas Installation Manual** available at:
<http://gamma.iseozero1.com/en/controllo-accessi/>

4.1 READER/VALIDATOR ELECTRICAL CONNECTIONS



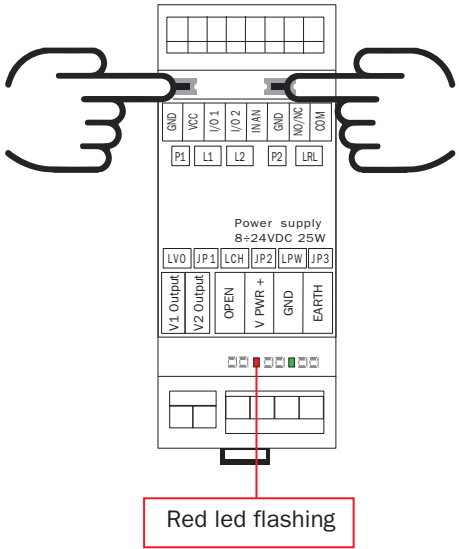
- Power supply: 8-30 VDC 0.5A MAX
- Minimum/maximum cross-section of the cables is: 0.20÷1.5 mm² (24÷15AWG).

BUS ADDRESS	JP 1
ADDRESS 1 =	
ADDRESS 2 =	
ADDRESS 3 =	
ADDRESS 4 =	
ADDRESS 5 =	
ADDRESS 6 =	
ADDRESS 7 =	
ADDRESS 8 =	



5. ACTUATOR CONFIGURATION: LOCKBUS SELECTION

- 1 Switch on the Actuator and check if red led flashes:
1 time (Lockbus 1) = **Reader/Validator.**
2 times (Lockbus 2) = **Stand-Alone gate.**
- Change the Lockbus type accordingly to your configuration, following the next point.



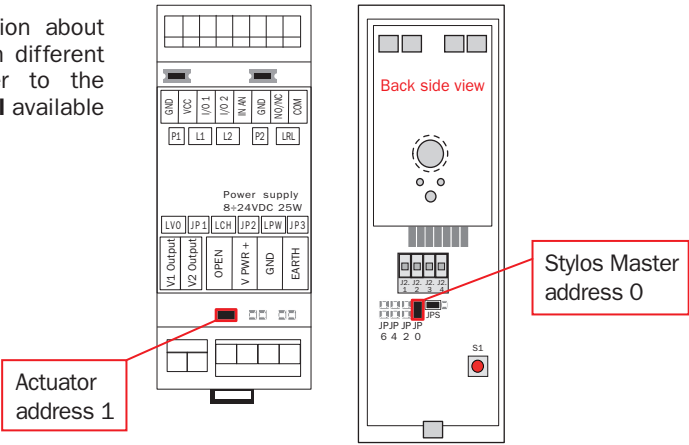
- 2 Switch on the Actuator keeping pressed both buttons simultaneously for 1 sec.
Switch on it again to check if now red led flashes 1 or 2 times.
If not repeat the procedure.

6. STAND-ALONE GATE: EXCHANGE OF CODED KEYS WITH ACTUATOR (JUMPER SETTING)

Set jumpers on Actuator and Stylos as per pictures below. Note this configuration is correct only in case of 1 Stylos (Master) and 1 Actuator (Slave).



For more information about jumper setting with different configuration, refer to the **Stylos User Manual** available at app.iseo.com.

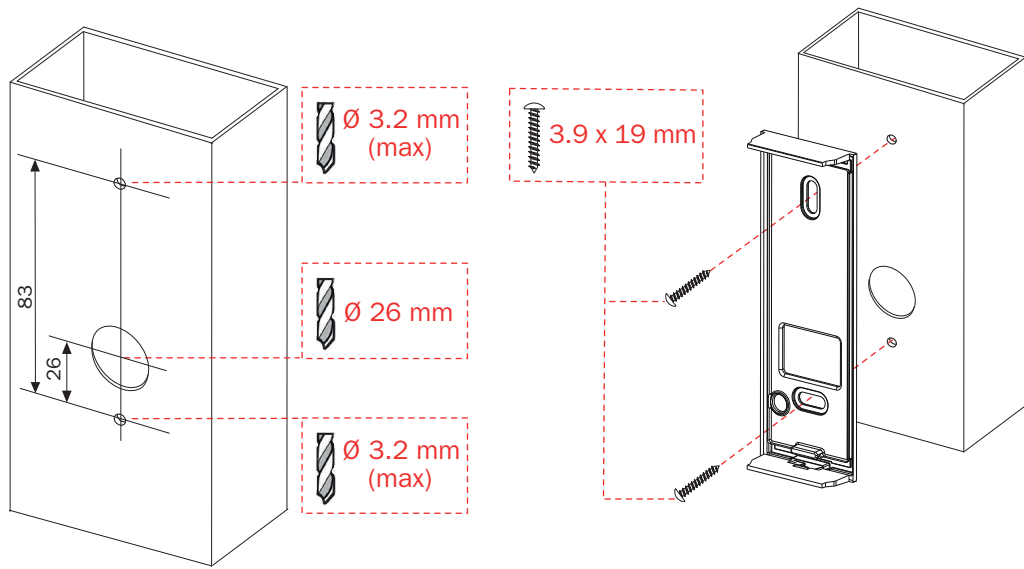


6.1 STAND-ALONE GATE: EXCHANGE OF CODED KEYS WITH ACTUATOR (EXCHANGE KEYS)

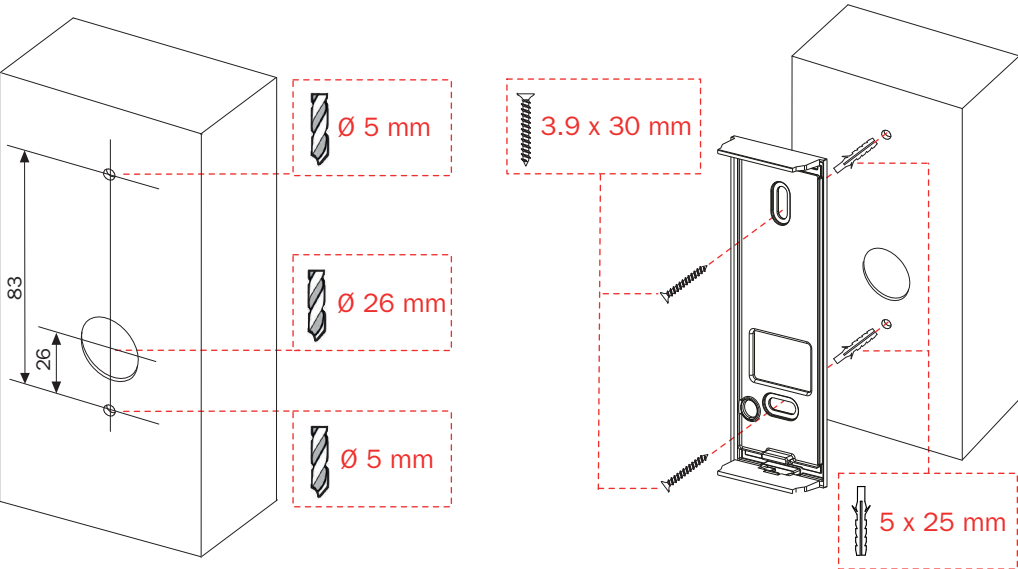
- 1 Switch on the actuator keeping pressed one button for 3 sec.
- 2 Switch on the Stylos keeping pressed the button and wait for the acoustic and light signal, then release it immediately.
- Actuator address 1
- Stylos Master address 0

For more information regarding the exchange of keys, see the **Tutorial Video** available at app.iseo.com.

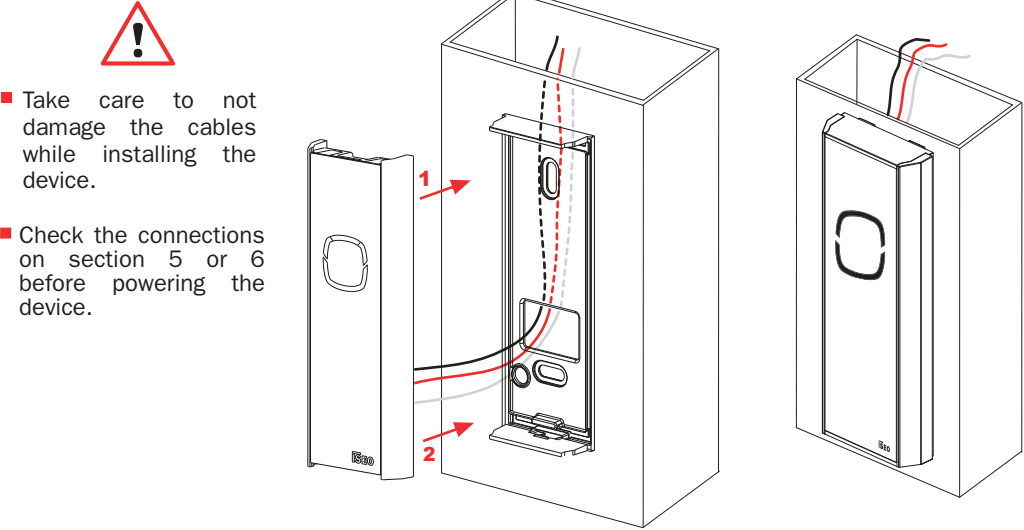
7. INSTALLATION ON A METAL PROFILE



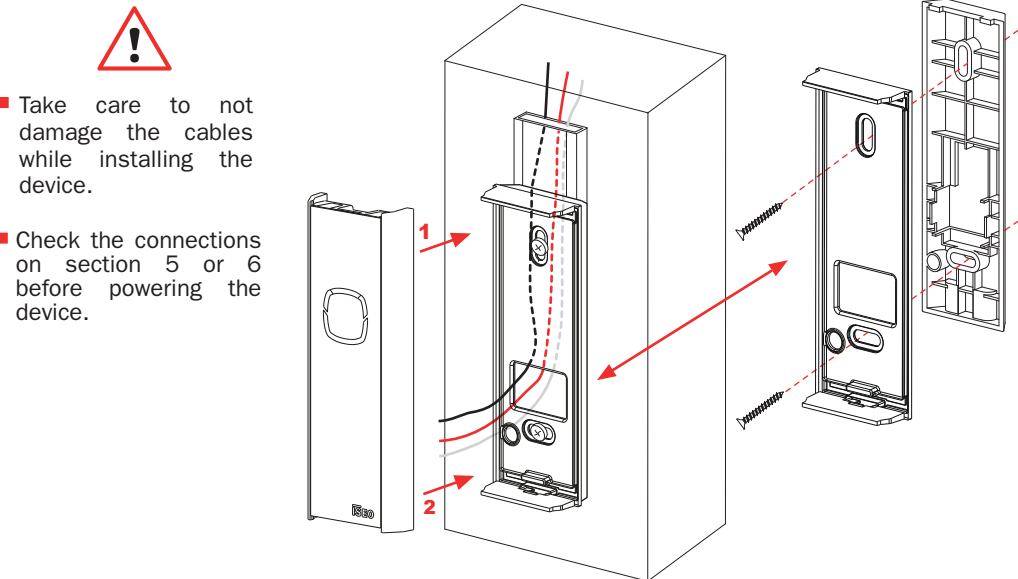
8. INSTALLATION ON A WALL



9. INSTALLATION WITHOUT THE SPACER



9.1 INSTALLATION WITH THE SPACER



DRILLING TEMPLATE

