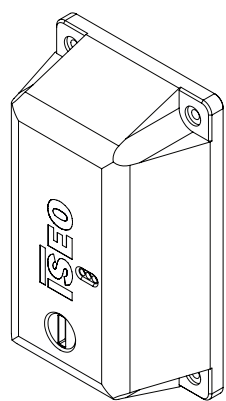


Heavy Duty Reader

INSTALLATION GUIDE

ISEO Zero1

ELECTRONIC
SOLUTIONS



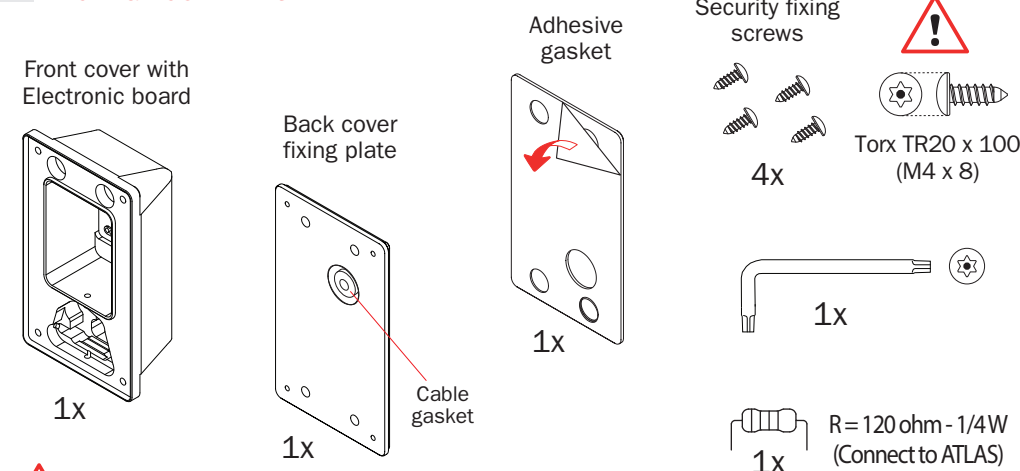
ISEO
iseo.com

Iseo Serrature s.p.a
Via San Girolamo 13
25055 Pisogne (BS)
ITALY
Tel. +39 0364 8821
iseo@iseo.com

ELECTRONIC SUPPORT SERVICE
iseozero1.com

Non contractual document. Subject to change. Cod. 600000E03201 - 10/09/2018
Heavy Duty Reader (EN) - © 2018 Iseo Serrature S.p.a. - www.iseo.com

2. PACKAGE CONTENTS



Wall fixings not provided in the kit. The installer must choose the most suitable fixings according to the wall type and material. ISEO recommends to install the Heavy Duty Reader in a concrete wall by M10 steel anchors with M6 bolts.

- Minimum recommended traction load for anchors: 150Kg.
- Maximum bolts diameters 6mm.
- Maximum bolts head dimension: Ø 14mm diameter x 6mm thickness.

3.1 WARNINGS



- Read this manual prior to use the device in order to ensure a safe and proper use.
- Preserve this manual as future reference.
- The installation of the device requires the intervention of qualified staff, adequately trained by ISEO.
- The instructions should be carefully followed during the use of the product. These instructions should be passed on by the installer to the user.
- No modifications of any kind are permitted, except for those described in these instructions.
- The product must be destined only for the use for which it is expressly designed and therefore as an heavy duty reader and writer unit for civil and industrial locations. Any other use is considered improper and dangerous.
- Keep the **Front cover** inside its box during the installation of the **Back cover fixing plate**, to prevent drilling residues from entering inside the **Electronic board**.
- Use the **Adhesive gasket** only in case of not-straight or no flat wall. If the **Adhesive gasket** is required, take care to uniformly apply it to seal the reader to the wall, in order to avoid any water penetration.
- Check if the **Back cover gasket** is correctly fitted in the slot. If not re-position it correctly in order to avoid any water penetration.
- Do not enlarge, damage or modify the **Cable gasket**, failure to do that it could compromise the water sealing. Use a max cable diameter of 7mm to ensure the cable passage through the cable gasket hole.
- Check the **Wiring cable** perfectly fits inside the **Cable gasket** hole without leaving any space that could allow water penetration. Use a min cable diameter of 3mm to ensure the cable gasket impermeability.

1. TECHNICAL SPECIFICATIONS

■ PRODUCT:

Wall mounting antivandal heavy duty reader/writer for F9000 keys.

■ FEATURES:

- Solid metal antivandal housing: impact protection grade IK10.
- All weather outdoor usage: IP66, IP67 and IP69 protection grade.
- High corrosion resistance: tested for 480 hours in NSS (Neutral Salt Spray chamber).
- Security fixing screws.
- Ability to replace the mechatronic cylinder core.
- No sharp edges (all rounded edges).
- RS485 interface.
- Power supply: by Atlas
- Power consumption: 2W
- Multicolor signaling LEDs (green, blue, red).
- LxDxH = 150 x 90 x 53 mm

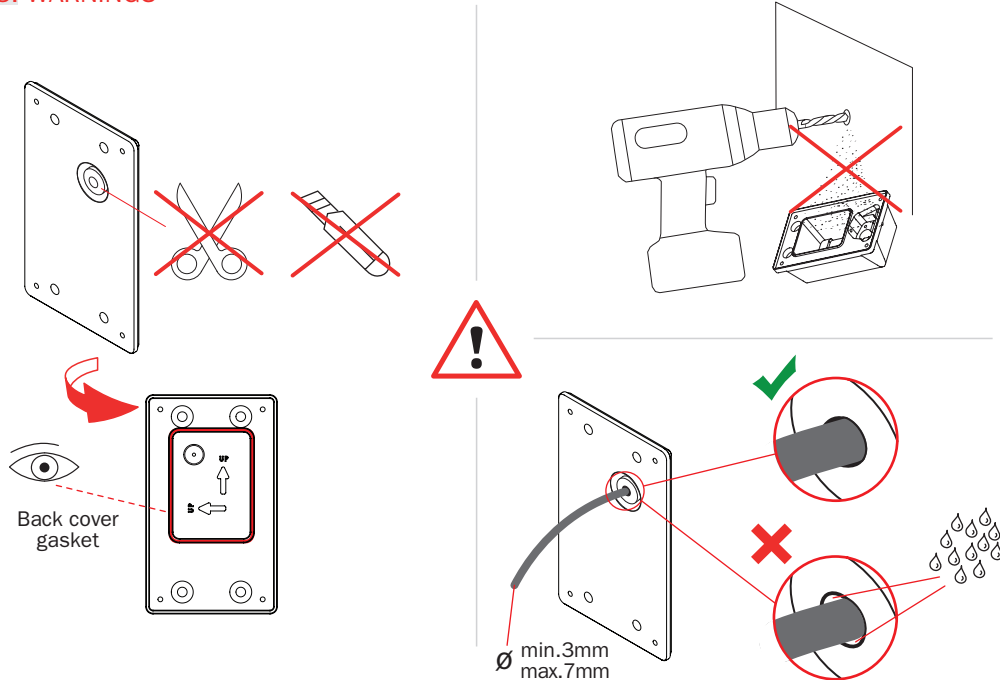
■ CERTIFICATIONS:

EN60068-2-1, EN60068-2-2, EN60068-2-3, IEC 60529, IEC 62262.

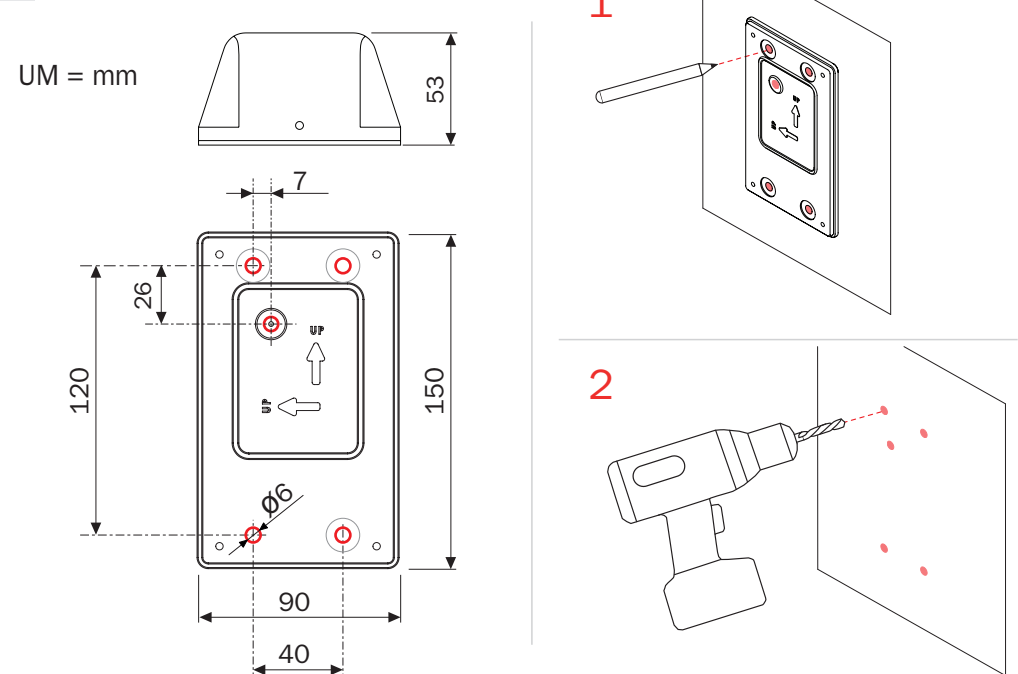
■ ENVIRONMENTAL CHARACTERISTICS:

- Operating temperature: -40°C ÷ +80°C
- Storage temperature: -40°C ÷ +80°C
- Humidity: max 93% without condensation

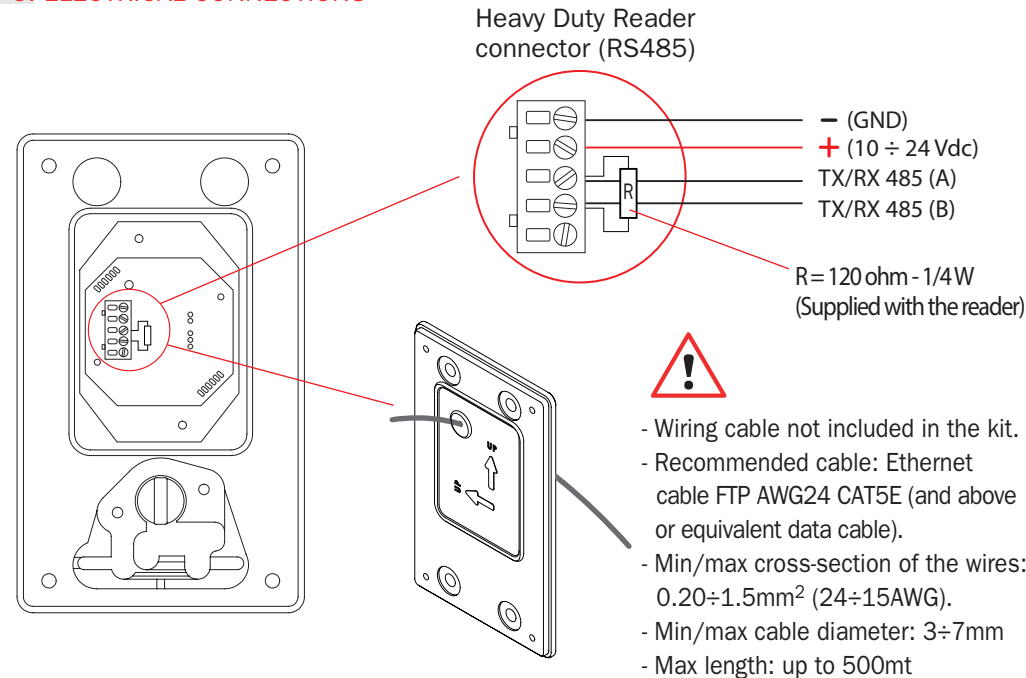
3. WARNINGS



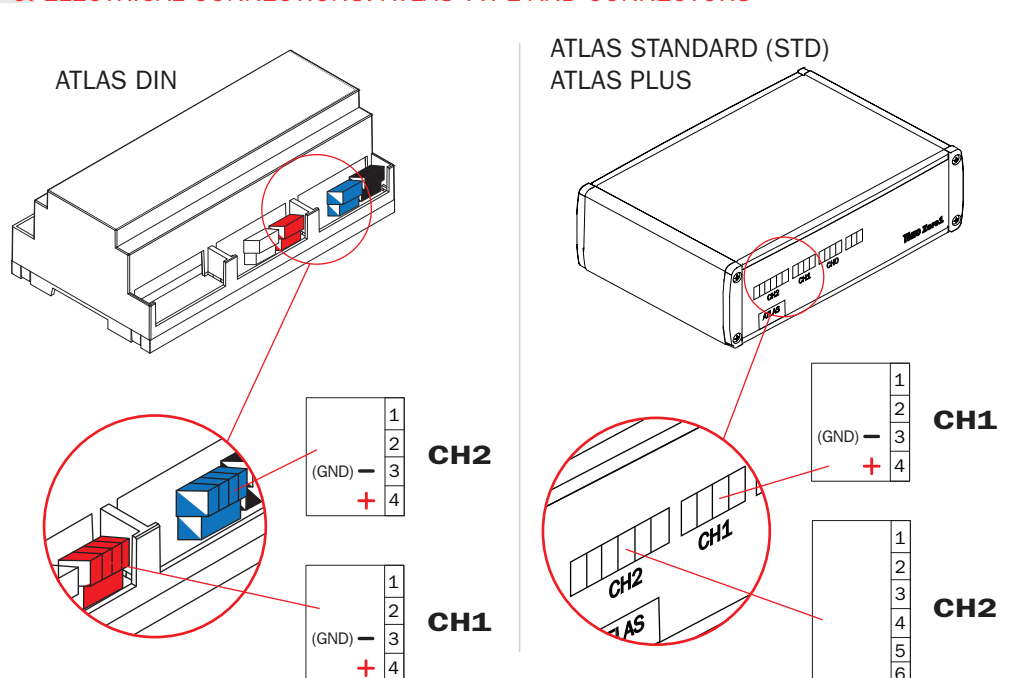
4. DIMENSIONS



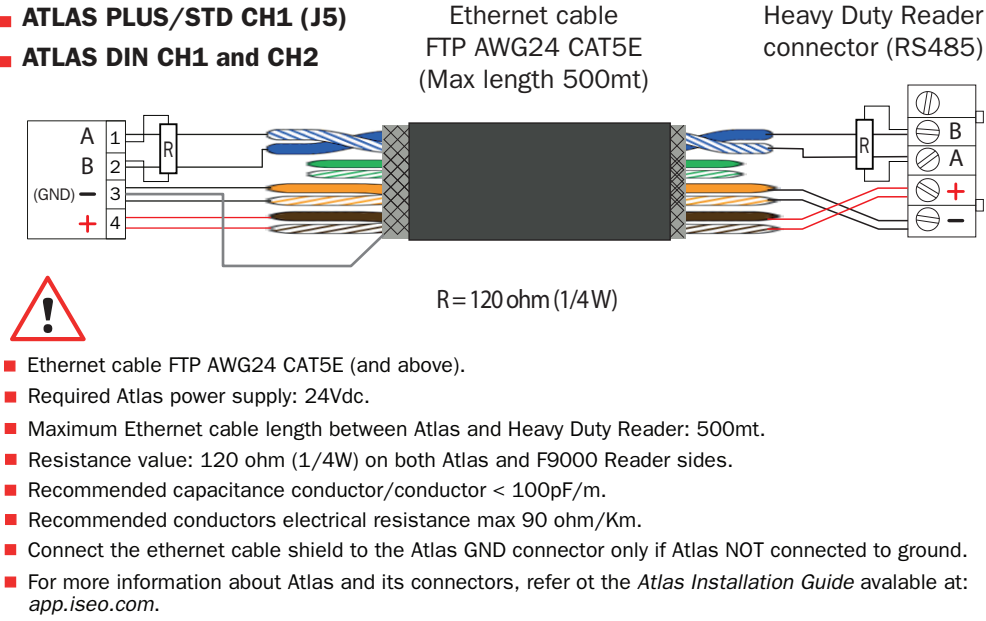
5. ELECTRICAL CONNECTIONS



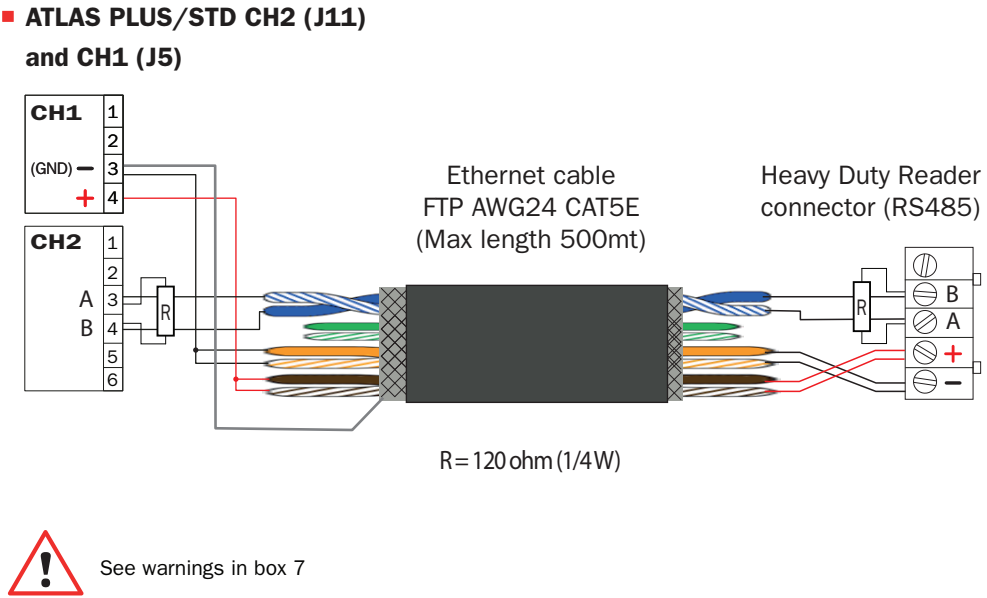
6. ELECTRICAL CONNECTIONS: ATLAS TYPE AND CONNECTORS



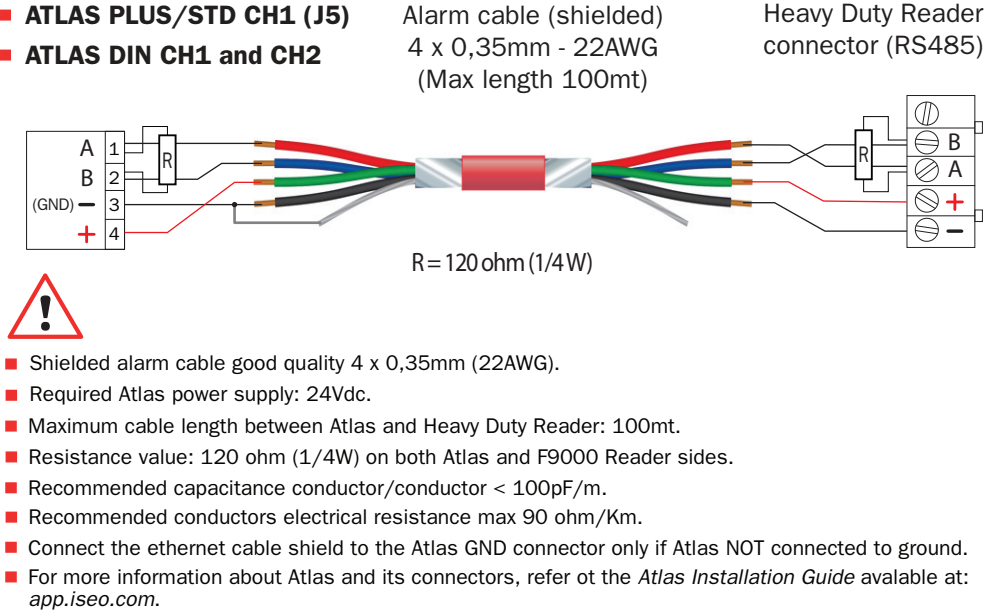
7. ELECTRICAL CONNECTIONS EXAMPLE: TO ATLAS BY ETHERNET CABLE



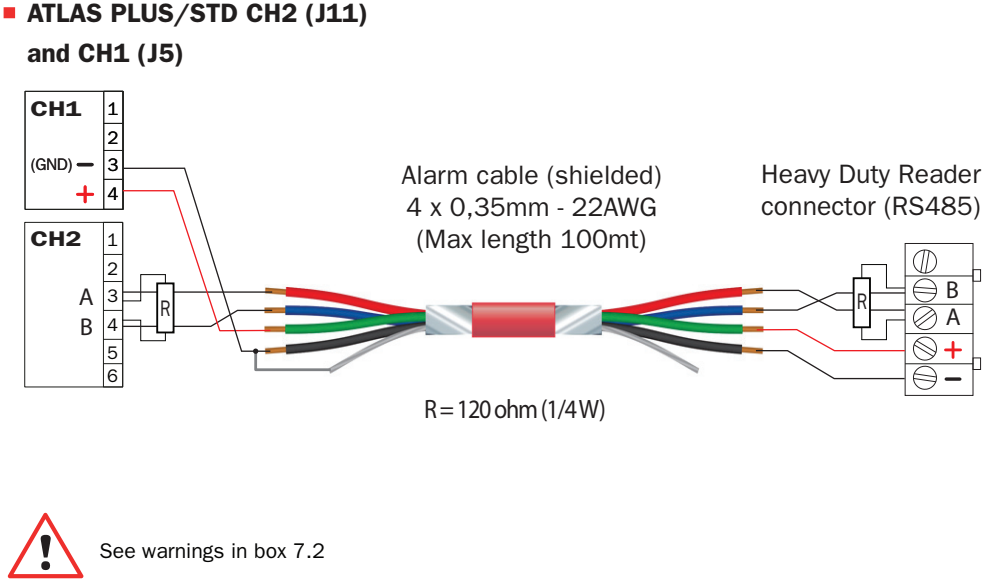
7.1 ELECTRICAL CONNECTIONS EXAMPLE: TO ATLAS BY ETHERNET CABLE



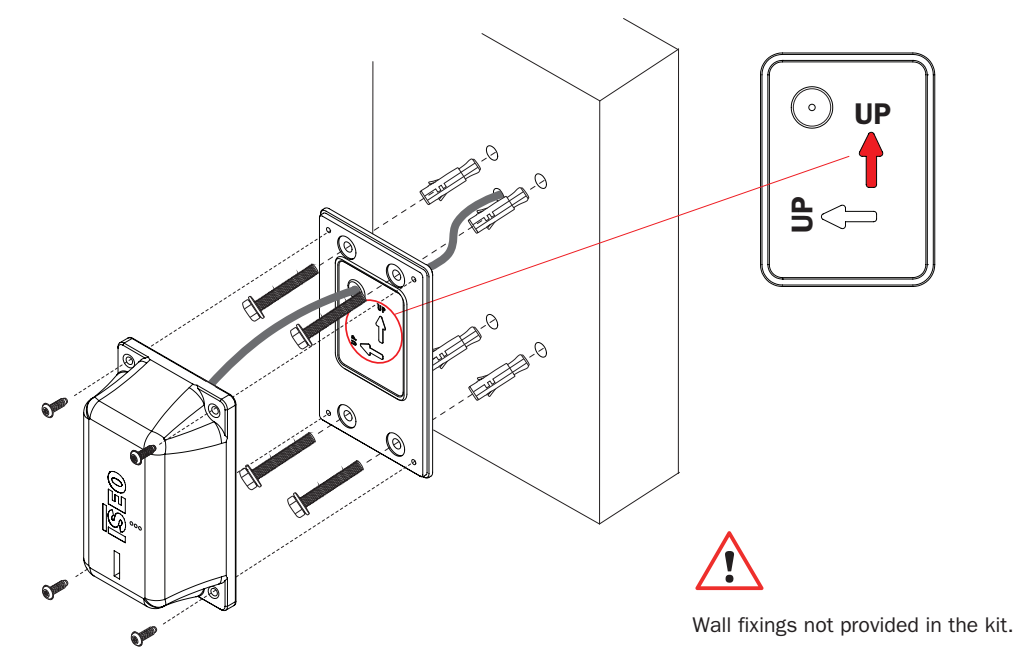
7.2 ELECTRICAL CONNECTIONS EXAMPLE: TO ATLAS BY ALARM CABLE



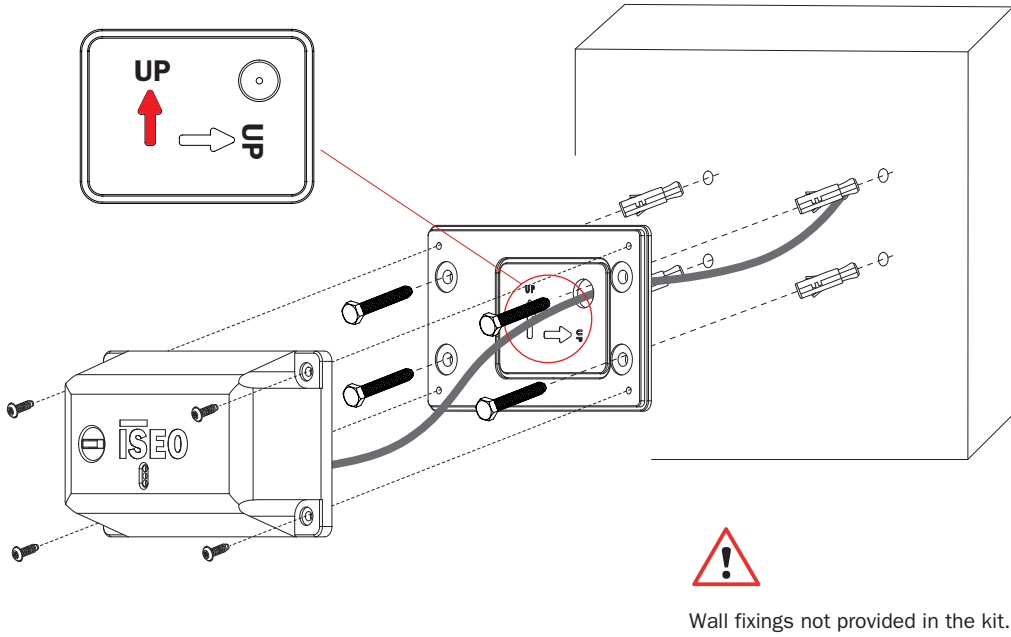
7.3 ELECTRICAL CONNECTIONS EXAMPLE: TO ATLAS BY ALARM CABLE



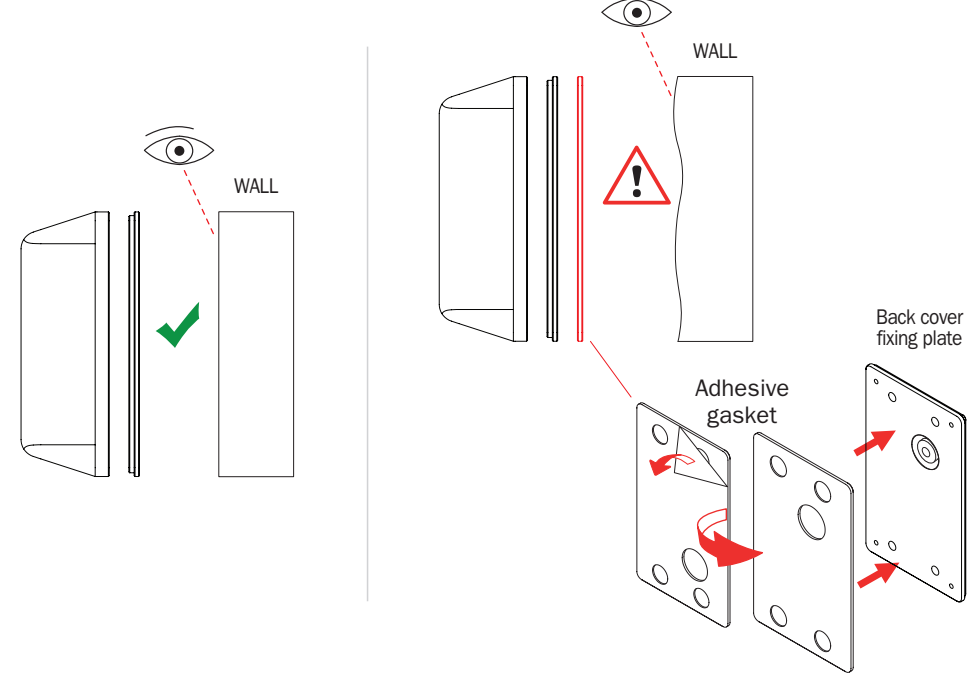
8. INSTALLATION EXAMPLE: VERTICAL ON A WALL



8.1 INSTALLATION EXAMPLE: HORIZONTAL ON A WALL



9. ADHESIVE GASKET USE



9.1 INSTALLATION EXAMPLE: VERTICAL WITH ADHESIVE GASKET (NOT FLAT WALL)

